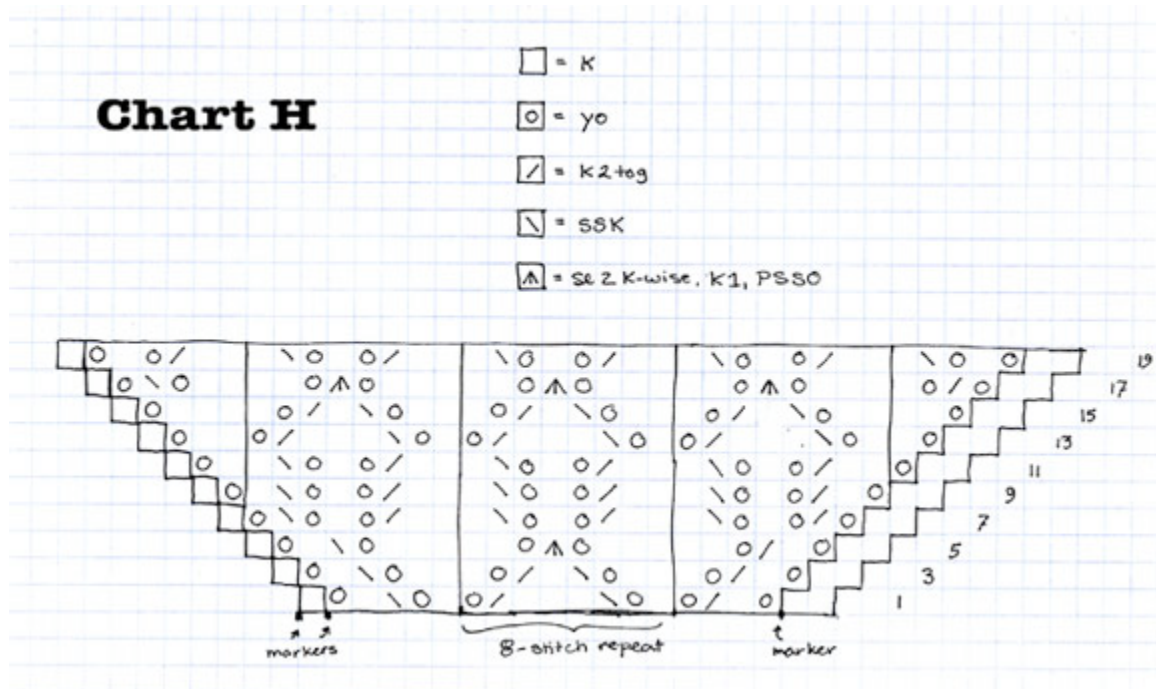


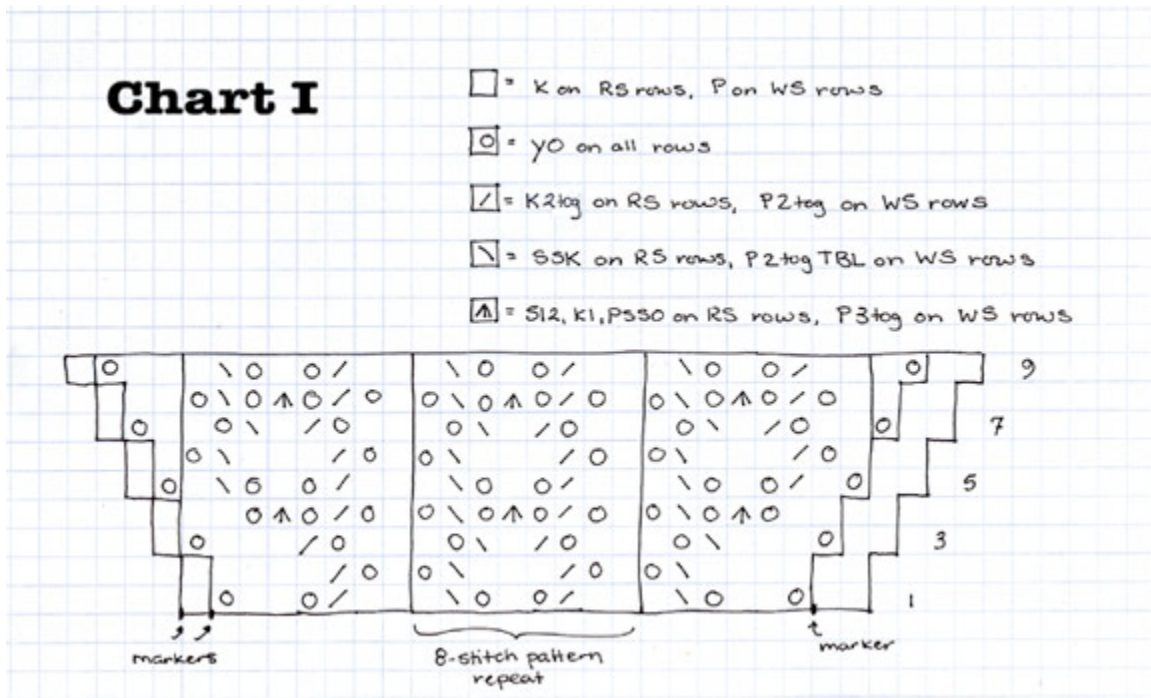
Pangea Shawl Step 5

Just two charts to go!

Work Chart H as you have the previous charts. Remember that only the odd-numbered rows are charted. On odd-numbered rows, knit the two border stitches (the stitches before the first marker), work across the right half of the shawl in the pattern as charted, knit the center stitch (the stitch between the two center markers), work the left half of the shawl identically to the right half, Then knit the final two border stitches (the stitches after the last marker). On even-numbered rows, K2, P across until two stitches remain, then K 2. Don't forget to work Row 20.



Unlike Charts A-H, **Chart I shows every row, both right and wrong side.** On this chart, every row is part of the pattern stitch, so note that the symbols will indicate one stitch as you work across the right side and another stitch as you work across the wrong side. Keep working the border stitches and the center stitch in garter as you have all along.



Once you've worked all nine rows of Chart I, bind off as follows. K2, slip these stitches from the right needle to the left and K2tog, [K1, slip the two stitches from the right hand needle to the left and K2tog]. Continue working as indicated in brackets until the bind off is completed.

Weave in all ends.

Soak your finished shawl for 20 minutes or so, pin it out to block, and enjoy!